

## Caution

Never bore holes in the vicinity of underground drains, pipes or cables. If in doubt, locate pipes and cables using a suitable metal detector or cable avoiding tool, available from your local HSS Hire Shop.

Take the unit to the location where the first hole is to be made, start the engine as described in GETTING STARTED and bring to full revs.

The Post Hole Borer utilises the long leverage of the handle to allow you to drill into the ground.

Move the tip of the auger over the marking for the hole and with the drive disengaged position the point of the auger at the centre of the mark.

## Tip

The Post Hole Borer gives best results if it does not go in vertically, start boring with The top of the auger angled one or two degrees towards you.

Apply downward pressure on the control bars and start the auger turning by pulling the right hand lever in on the seesaw control lever.

Continue to apply downward pressure on the handle to drive the auger into the ground.

Every few moments gently lift the auger a little by applying slight upward pressure on the control bars, this will clear any loose soil.

Continue until the posthole is to the required depth.

To enable you to remove the auger from a hole you can reverse the augers direction of rotation, to do this, pull the seesaw control's left hand lever in.

When the posthole is complete, stop the engine and move to the next posthole to be made.

If you need to move the unit some distance between work, disengage the drive to the auger. Next, swing the auger towards the engine and secure with the securing lever.

To finish, set the engine's ON/OFF switch to OFF and close the fuel tap.

Remove the auger and secure the auger power unit in the forward position with the auger power unit-securing lever.

Take your time and don't overdo it. You are more likely to have an accident if you are tired or rushing.

## EQUIPMENT CARE

Never push the equipment beyond its design limits. If it will not do what you want with reasonable ease and speed, assume you have the wrong type or size of unit for the job. Contact you local HSS Hire Shop for advice.

Regularly check the fuel level and top up as required using the correct fuel: unleaded petrol.

Check the engine oil level daily. Let the engine cool, stand it on level ground, withdraw the dipstick and wipe clean. Now, replace the dipstick, withdraw it a second

time and verify that the oil level is between MIN and MAX. Top up as required.

Clean the equipment regularly, rather than wait until the end of the hire period.

When not in use, store the equipment somewhere clean, dry and safe from thieves and unauthorised users

## FINISHING OFF

When you have finished, set the engines ON/OFF switch to the OFF position and close the fuel tap.

Remove the auger bit by reversing the procedure in GETTING STARTED ensuring that you return the lynch pin and clip to the auger retaining socket.

Secure the auger power unit in the forward position with the auger power unit- securing lever, then return the inner shaft to the lowered position.

Give the unit and auger a final clean ready for return to your local HSS Hire Shop.



## ...any comments?

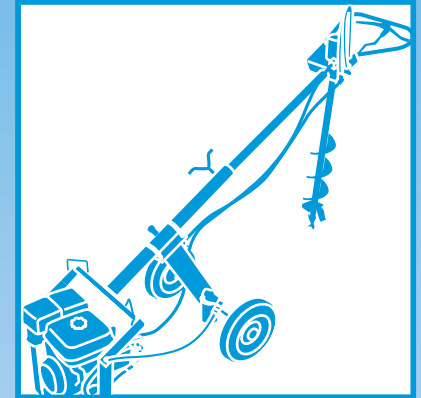
If you have any suggestions to enable us to improve the information within this guide please fax your comments or write to the Product Manager at the address below  
Fax: 020 8687 5001

©HSS Hire Service Group Plc 2002 No. 449/02

Group Office: 25 Willow Lane, Mitcham, Surrey CR4 4TS

Web Site: <http://www.hss.com>

# HSS Hire Shops



## Petrol Post Hole Borer

Make short work of digging postholes with this powerful 4-stroke petrol borer.



## GENERAL SAFETY

**For advice** on the safety and suitability of this equipment **contact your local HSS Hire Shop.**



There is a **serious risk of personal injury** if you do not **follow all instructions laid down in this guide.**


The hirer has a responsibility to **ensure that all necessary risk assessments have been completed** prior to the use of this equipment.


**This equipment should only be used by an operator who has been deemed competent to do so by his/her employer.**


**This equipment should be used by an able bodied, competent adult** who has read and understood these instructions. Anyone with either a temporary or permanent disability, should seek expert advice before using it.

**Keep children, animals and bystanders away from the work area.** Cordon off a NO GO area using either cones, barriers or tape, available for hire from your local HSS Hire Shop.

  **Never use this equipment if you are ill, feeling tired, or under the influence of alcohol or drugs.**

 **Safety Goggles MUST be worn by everyone in the work area.**

 **This equipment generates potentially harmful noise levels.** To comply with health and safety at work regulations, **ear defenders must be worn** by everyone in the vicinity.

  **Wear practical, protective clothing, gloves and footwear.** Avoid loose garments and jewellery that could catch in moving parts.

**Ensure the work area is well lit and ventilated,** if in doubt, ask about lighting and ventilation equipment at your local HSS Hire Shop.

**This type of Post Hole Borer must only be used on level ground.** If you need to work on slopes, contact your local HSS Hire Shop for advice on alternative Post Hole Boring equipment.

**Always switch OFF and wait for moving parts to stop before attempting to service or adjust the equipment in any way.**

## Fuel Safety

**NEVER refuel while the engine is hot or running.**

**Never smoke or allow naked lights into the area while refuelling.**

**Never inhale fuel vapour.**

**ALWAYS mop up any spillage as quickly as possible, and change your clothes if you get fuel on yourself.**

**ALWAYS store fuel in a purpose-made sealed container, in a cool, safe place well away from the work area.**

**Engines, especially the exhausts, get very hot** so switch OFF and allow to cool before touching them.

**Keep flammable materials well away from engine and exhaust.**

**Never leave the engine running and unattended.**

**Take all necessary precautions to protect yourself and others against the possibility of contracting infectious diseases in your work environment.**

**Make sure you know how to switch this machine OFF before you switch it ON** in case you get into difficulty.

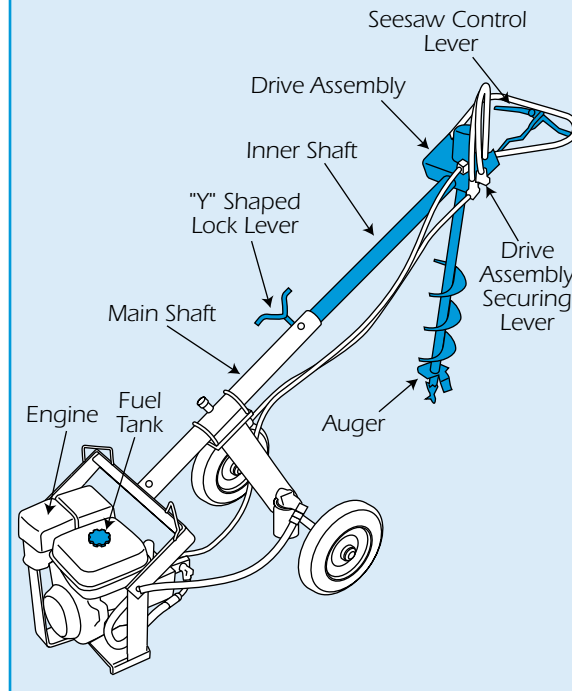
## Exhaust Danger

**NEVER operate petrol engines indoors or in a confined space. The exhaust contains gases that can kill.**

**Check the equipment before use,** if it shows signs of damage or excessive wear, return it never attempt to repair it yourself.

## GETTING STARTED

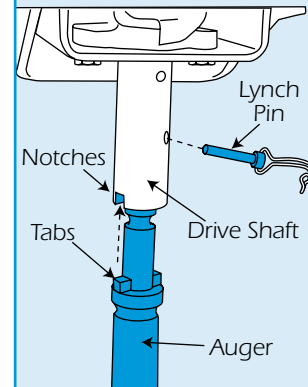
### Petrol Post Hole Borer



**It is essential to familiarise yourself with all the controls before starting.**

**Position the unit on firm, level ground and ensure that it will be deployed onto a firm footing. DO NOT use on slopes, soft ground or where there is a risk of subsiding.**

## Fitting the Auger



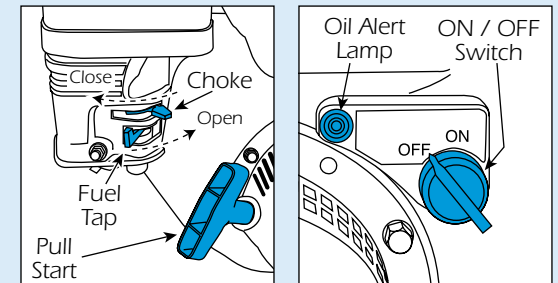
**Undo the 'Y' shaped lock lever** (turn anti-clockwise) in the middle of the main shaft **and withdraw it.**

**Extend the inner shaft to its full length then replace and fully tighten the lock lever.**

The shaft can only be used at a fixed length, **ensure that the lock lever screws into the shaft correctly.**

**Release the drive assembly securing lever** to allow it to swing freely.

## Engine



**Remove the lynch pin from drive shaft and insert the auger,** ensure that the two tabs on the auger bit engage in the drive shaft securely. If correctly fitted the lynch pin can be replaced easily.

**Once reinserted, make sure you engage the lynch pins spring retainer.**

**Check the engine oil and fuel levels,** (see EQUIPMENT CARE).

**Close the choke** (if starting from cold), **open the fuel tap** and set the engine ON/OFF switch to ON.

**Grasp one of the handles on the engine-mounting bar** and give two or three pulls on the starter cord.

If the engine does not start, adjust the choke setting.

**With the engine running, open the choke** and let the engine tick over for a few moments to warm up.

**When the engine is warm the unit is ready to use.**

## BASIC TECHNIQUES

**Clear the work area of any obstructions,** e.g. washing lines, garden furniture etc.

**Mark out where you need to drill the postholes** and remember the saying, **measure twice, drill once.**