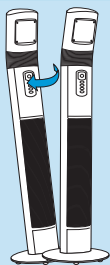


SAFETY TIP OVER SWITCH

Appliance switches off if it tips-over. Return the unit to the upright position and switch on to continue using.

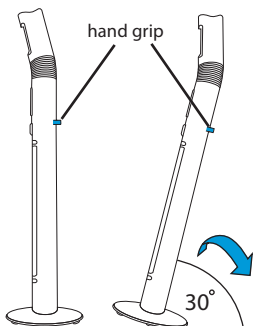


MOVING

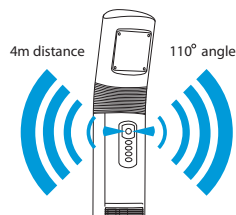
Ensure **heater is turned off and unplugged** before moving.

To manoeuvre the unit, tilt the heater backwards to approx. 30° and using rear transport rollers move it to desired location.

Always use the hand grip located on the rear of the heater.



PIR ECONOMY FUNCTION

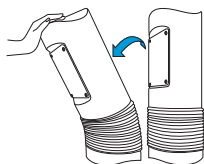


The PIR (Passive Infrared) economy feature enables the Patio Heater to automatically shut down when not in use. The PIR sensor constantly monitors peoples movements up to a distance of 4 metres and if after 4 minutes it does not detect movement it will switch itself off. It will automatically switch on again

when someone passes by.

LIGHT HEAD OPERATION

The light head can be tilted in 4 positions. **Do not force or over rotate these 4 positions** as the light-neck may get damaged.



WARNING

Do not lift or pull heater using the light head as this will damage the light neck mechanism

EQUIPMENT CARE

Never push the equipment beyond its design limits. If it will not do what you want with reasonable ease and speed, assume you have the wrong equipment for the job. Contact your local HSS Hire for advice.

Keep the equipment clean - you will find this less of a chore if you clean it regularly, rather than wait until the end of the hire period.

Before cleaning, turn the **heater off, unplug** from the power supply and **wait for the unit to cool down**.

To clean the heater use a soft cloth to wipe off any dust.

If the heater or aluminium reflector is very dirty, use a damp cloth and wipe dry.

A dirty reflector reduces heater output.

Do not use any cleaning detergents, sprays or other chemicals, as they will damage the unit.

When not in use, cover the equipment and store somewhere clean, dry and safe from thieves.

FINISHING OFF

Switch the unit off. Disconnect from power supply. Wait until it cools down.

Give the unit a final clean up ready for return, to your local HSS Hire.



... have you been trained

The law requires that personnel using this type of equipment must be competent and qualified to do so. Training is available at HSS Training Solutions 0845 766 7799

...any comments?

If you have any suggestions to enable us to improve the information within this guide please e-mail your comments or write to the Safety Guide Manager at the address below e-mail: safety@hss.com

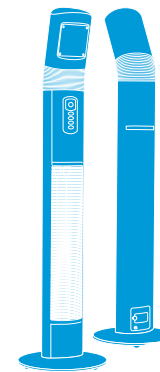
©HSS Hire Service Group Ltd 2010 No. 471/01

Group Office: 25 Willow Lane, Mitcham, Surrey CR4 4TS

Web Site: <http://www.hss.com>

471/O1

Operating & Safety Guide 471



Patio Heater

Designed for domestic and commercial use, to heat indoor and outdoor spaces using energy efficient Far-Infrared Carbon Fibre heating technology.



Code 90232

GENERAL SAFETY

For advice on the safety and suitability of this equipment **contact your local HSS Hire.**

There is a serious risk of personal injury if you do not follow all instructions laid down in this guide.

The hirer has a responsibility to ensure that all necessary risk assessments have been completed prior to the use of this equipment.

This equipment should only be used by an operator who has been deemed competent to do so by his/her employer.

This equipment should be used by an able bodied, competent adult who has read and understood these instructions. Anyone with either a temporary or permanent disability, should seek expert advice before using it.

Keep children, animals and bystanders away from the work area. Cordon off a NO GO area using cones and either barriers or tape, available for hire from your local HSS Hire.



Never use this equipment if you are ill, feeling tired, or under the influence of alcohol or drugs.



Wear practical, protective clothing, gloves and footwear.

Do not touch the grilles or heating element during use or attempt to move the heater.

Extreme care should be taken whenever the heater is left operating and unattended.

Do not operate any heater with a damaged cord or plug, or after the heater malfunctions, or has been dropped, or damaged in any manner. Return the heater to local HSS Hire.

Do not attempt to repair or adjust any electrical or mechanical functions.

Do not site the heater on soft surfaces or where openings may become blocked.

Ensure the unit is upright on a flat stable surface before operating.

Do not insert or allow objects to touch the heating element and never place anything on the heater safety guard (e.g. towels), as this may damage the heater and could cause an electrical shock or fire.

Never use your heater to dry washing.

Always disconnect your appliance from the mains before any cleaning.

Do not use the heater in areas where petrol, paint, or other flammable substances are stored.

Always unplug the heater when not in use. When disconnecting, **never pull by the cord.** Always grip the plug and pull from the power socket.

CAUTION

If the heating element has stopped glowing it may still be live, please check that the heat setting indicates the heater is off.

Special care should be taken when any heater is used near children and pets.

Never locate the heater where it may fall into a swimming pool or other water container. Never use in a bathroom or shower room

Do not use this heater in conjunction with a timer device or any other device, which facilitates unattended switch on.

Do not direct the heater towards curtains, furniture or other flammable objects (see Moving and positioning).

The front grille is intended to prevent direct access to the heating elements and must be in place when the heater is on.

ELECTRICAL SAFETY

Patio Heater plug into a standard 240v 13amp power socket. If the equipment fails, or if its power supply cable or plug becomes damaged, return it. **Never try to repair it yourself.**

Keep flexes out of harm's way, and clear of the work area. **Never carry the product by the cable.**

Never pick up or carry the product when it is operating or still connected to the mains supply.

When necessary use only **extension cords of a type approved for the application and with conductors of adequate cross section.** The heater may otherwise lose performance and the extension cord may overheat.

Check the extension cord at regular intervals. If it shows any signs of damage replace immediately.

When the equipment needs extension cord it is recommended to use **minimum 2,5 mm² cross section cord with maximum length of 15m.**

Extension leads should be fully unwound and loosely coiled, away from the equipment. Never run them through water, over sharp edges or where they could trip someone.



Keep the equipment dry, using electrical equipment in very damp or wet conditions can be dangerous.

To reduce the risk of electric shock, use a suitable RCD (Residual Current-Operated Device) available from your local HSS Hire. Alternatively power the equipment from a mains circuit with a built in RCD.

Ensure the power socket is switched OFF before plugging into the power supply.

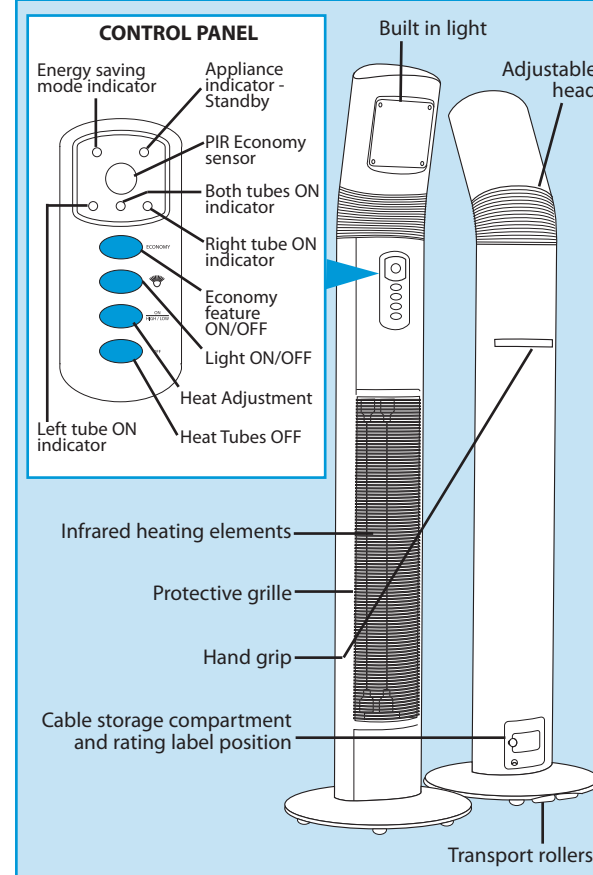
GETTING STARTED

Never use the Patio Heater until you have fully read and understood this User Guide and the machine has been properly set up using the information it contains.

Patio Heater has been designed for domestic and commercial use, to heat indoor and outdoor spaces using energy efficient far-infrared Carbon Fibre heating technology. **The appliance must only be used for the intended purpose according to these instructions.**

The unit is weatherproof, however, to prolong the life of the heater it is **strongly recommended** that the heater is **stored in a dry place** during heavy rain and when not in use **covered.**

IDENTIFIER



BASIC TECHNIQUES

Move the equipment to desired place. Make sure the **surface is flat and stable.** When positioning the unit observe the recommended **safety distance** from surrounding objects. Front of the equipment should be at least 1.5m away from the nearest object. Top, back and sides, at least 1m away.

Before connecting heater to power supply ensure the **power socket is switched OFF**, then plug in unit to socket and switch the socket ON. The heater is ready to use.

Start using heater by pressing heat adjustment button in control panel.

