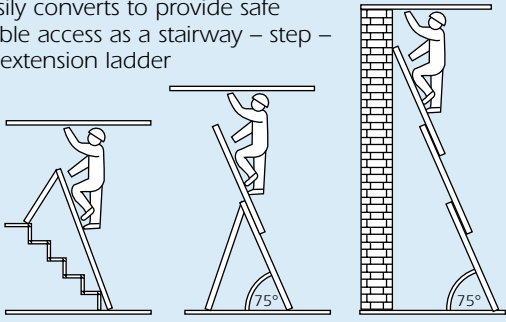


Combination Ladder

Easily converts to provide safe stable access as a stairway – step – or extension ladder



That done, with the top resting against the structure, **pull out the base to leave the ladder at the correct working angle** (see diagram).

For maximum safety, rope the top of the ladder to the structure you are climbing, **and tie the bottom to stakes**, driven into the ground.

As a STEP LADDER...

Fully close the ladder, raise it vertically and unlock all of the safety catches.

Now **hinge out the middle and top sections as a single unit**, as far as the retaining straps will allow, before clipping the metal locking bars securely into place.

Finally, **extend the top extension piece as required**, making sure it overlaps the second section by at least two rungs before locking the safety catch to lock it in place.

As a STAIR LADDER...

Ideally, get an able bodied assistant to help you. Remove the extension piece and stand the ladder with its stabiliser bar at the top of the stairway.

Now, **hinge the base and mid-sections into the step ladder format and refit the extension piece upside down underneath the middle section** – with its rung hooks facing upwards and outwards, these hook up and over the appropriate rung for the height required on the middle section.

That done, **engage the metal locking bars** to brace the ladder, **stand the extension piece on a lower step and adjust** until the bars are horizontal. **Then lock the safety catch.**

Finally, **adjust the ladder's position so its feet are as far from the step's edges as possible** and either rope it to a banister or have a helper steady it while in use.

BASIC TECHNIQUES

Always climb the ladder's outer face – never the underside.

While climbing, **keep your feet in the middle of the rungs and grip the sides firmly with both hands.**

Never carry anything while climbing unless you can do so leaving your hands free – say, by using a shoulder bag. If necessary, climb first then haul up whatever you need after you on a rope.

When working, **never overstretch or lean too far to one side.** If you cannot reach, move the ladder.

Never use the ladder as a work platform for jobs requiring a lot of force. It could topple over.

EQUIPMENT CARE

Never use the ladder for anything other than its intended purpose. If it will not do what you want with reasonable ease, assume you have the wrong piece of equipment for the job. Contact your local HSS Hire Shop for advice.

Keep the ladder clean. You will find this less of a chore if you clean it regularly, rather than wait until the end of the hire period.

When not in use, store the ladder somewhere clean, dry and safe from thieves. Prop it against a wall or lay it flat on the ground. Never hang it up by its rungs or stiles.

FINISHING OFF

Return the ladder to its original, extension ladder format, clipping the metal bracing struts along the base section for transit.

Now, simply **collapse the extension ladder as far as it will go.**

Finally, **lock the sections together** by locking the safety catches in the normal way.

All that remains is to give the equipment a final clean up ready for return, to your local HSS Hire Shop.



...any comments?

If you have any suggestions to enable us to improve the information within this guide please fax your comments or write to the Product Manager at the address below

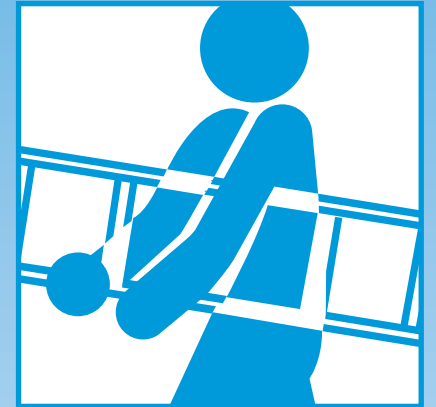
Fax: 020 8687 5001

©HSS Hire Service Group Plc 2002 No. 503/02

Group Office: 25 Willow Lane, Mitcham, Surrey CR4 4TS

Web Site: <http://www.hss.com>

HSS Hire Shops



Combination Ladders

A range of lightweight ladders for use as either an extension, a stairway or a step ladder.



GENERAL SAFETY

For advice on the safety and suitability of this equipment contact your local HSS Hire Shop.


There is a serious risk of personal injury if you do not follow all instructions laid down in this guide.

The hirer has a responsibility to ensure that all necessary risk assessments have been completed prior to the use of this equipment.

This equipment should only be used by an operator who has been deemed competent to do so by his/her employer.

This equipment should be used by an able bodied, competent adult who has read and understood these instructions. Anyone with either a temporary or permanent disability, should seek expert advice before using it.

Keep children, animals and bystanders away from the work area. Cordon off a NO GO area using cones and either barriers or tape, available for hire from your local HSS Hire Shop.

 Never use this equipment if you are ill, feeling tired, or under the influence of alcohol or drugs.

 Wear practical, protective clothing, gloves, footwear and a hard hat.

Avoid loose garments and jewellery that could catch in moving parts. Tie back long hair.

Take all necessary precautions to protect yourself and others against the possibility of contracting infectious diseases in your work environment.

Ensure the work area is well lit and ventilated, if in doubt, ask about lighting and ventilation equipment at your local HSS Hire Shop.

Make sure that anyone in the immediate work area is warned of what you are doing.

Never use the ladder if you suffer from vertigo.

Have a helper support the ladder's base while you climb up and down – and to summon help if you have an accident.

Take special care when working in the vicinity of power cables, hanging lights and similar hazards – particularly when extending the top section.

Angle Safety

To ensure the ladder is at a safe angle, before use check that the white ball is visible in the window of the 'inclinometer' on the side of the base section. When configured as steps make sure, too, that the metal locking bars are engaged and horizontal.

Never use chairs, boxes, tables and so on to gain height.

Never use the ladder in very windy or blustery conditions.

Note that the combination ladder is designed to provide access for light maintenance work. Never use it as a work platform.

Never climb higher than the fourth rung from the top – particularly when the ladder is set up as a stepladder with the extension piece fitted.

Check the condition of the equipment before use. If it shows signs of damage or excessive wear, return it to your local HSS Hire Shop.

GETTING STARTED

Ladder Sizes

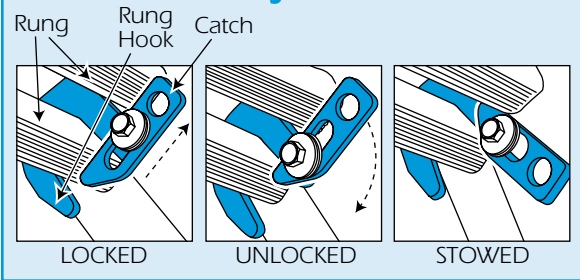
Comm Code	86341	86358	86360
Ext. ladder height	4.1m	5.8m	8.6m
Step ladder height	3.0m	4.1m	6.1m
Stairway ladder height	3.0m	4.1m	6.1m
Closed length	1.9m	2.4m	3.6m

The HSS combination ladder is fitted with a safety catch to each extendable section. The safety catch is designed to lock the respective section in place, so safeguarding against accidental separation during use.

It is the users responsibility to ensure that the safety catches are set and locked before using this equipment.

The catch has three positions; 1 Locked, 2 Unlocked and 3 stowed.

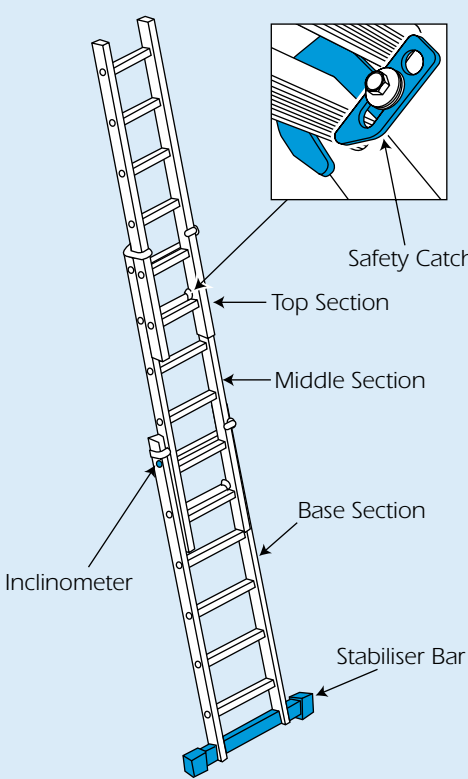
Safety Catch



Always set up the ladder on a firm, level, non slip surface. On soft ground stand it on boards to stop it's feet sinking in.

The ladder is made up of three sections – a base section with stabiliser bar, a hinged middle section, and

Extension Ladder



a top extension piece. These can be set up in any one of three configurations.

As an EXTENSION LADDER...

As supplied, the ladder forms a conventional extension ladder.

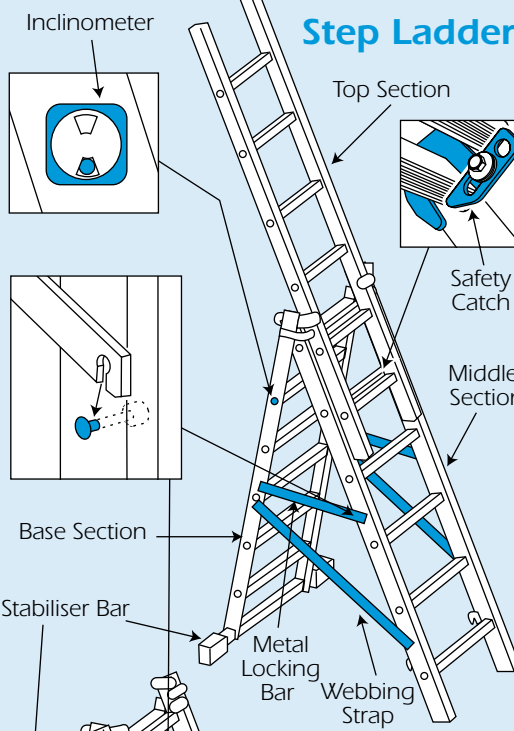
Lay the ladder flat on the ground and extend it to the required length, ensuring each section overlaps the one below by at least two rungs before locking its safety catch.

If desired, the extension piece can be completely removed to leave a 2 section-ladder. Never use the extension piece as a ladder on its own, its too narrow to be stable.

Decide where the ladder is to go, ensuring the top will rest against something solid within easy reach of the work area. Use a ladder stand-off (available from your local HSS Hire Shop) to clear window sills, gutters, downpipes and other obstructions.

You can now raise the ladder into position. Turn it over, brace the stabiliser bar against the foot of the structure to be climbed, lift up the top section and walk forward until the ladder is vertical.

Step Ladder



Stair Ladder

