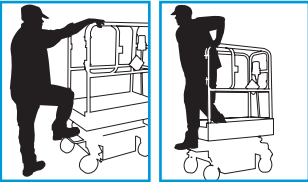


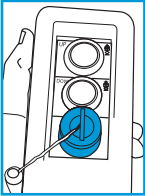
ENTERING AND LEAVING THE WORK PLATFORM

Always use **three points of contact when entering or exiting the platform**, using the guard rails provided. For example, **use two hands and one foot**, as shown below. **Use the step provided on the base of the machine.** **On entering the platform, ensure that the gate is closed behind you.**



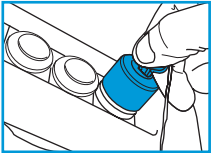
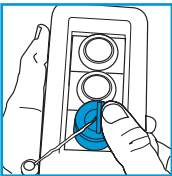
CONTROL PENDANT

The Control Pendant houses the platform raise and lower controls. **Pressing the ‘UP’ button raises the platform. Pressing the ‘DOWN’ button lowers the platform.** Take care to avoid repeated jerky movements which could cause unnecessary impact loads on the structure.



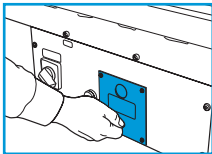
EMERGENCY STOP

An emergency stop button is provided on the control pendant. Once depressed, this isolates power to the raise and lower functions. **To restore functionality, twist the emergency stop button clockwise to release the button,** as shown below. **Turning the Maintenance Isolator switch to the ‘0’ position also has the effect of isolating power to the raise and lower functions.**



EMERGENCY LOWERING

To lower the platform in the event of an emergency, a control is provided at the chassis. **Turning the knob in an ANTICLOCKWISE direction,** as shown, opens the lift valve. Once the **valve is fully open the platform will lower,** at this point please **stand back to ensure your safety.** Always close the valve after use.



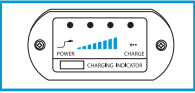
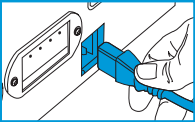
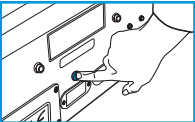
BATTERY CHARGING

A battery condition meter is fitted to the Pop Up as shown. **To check the battery condition, elevate the platform from ground level whilst at the same time pressing the red button above the battery condition meter.** This is the only way to obtain an accurate reading. The battery will require **charging if there is less than 4 bars on the display. Do not attempt to use the machine in this state as battery damage may occur. Never allow the battery to run completely flat as this damages the cells and can lead to premature battery failure.** It is good practice to charge the battery daily to ensure optimum battery condition.

The Pop Up Access Platform is supplied with a built-in multi voltage automatic battery charger, for supply voltages between 90V and 240V AC. The battery charger is located on the underside of the platform.

To charge the battery, follow these steps:

1. Turn the Maintenance Isolator switch to ‘0’ (OFF) position.
2. Connect the battery charger lead to the platform at the point shown.
3. Connect the battery charger to the power supply (either 110V or 240V AC at 50 Hz depending on the mains supply).
4. Turn the Maintenance Isolator switch to ‘2’ (CHARGE) position.
5. The battery should be fully recharged once the 95% LED is illuminated on the charging indicator.



OPERATING SPECIFICATIONS

Safe working load (SWL)	240kg
equivalent to	1 person + tools
Maximum platform height	1.63 metres
Maximum working height	3.63 metres
Platform length	1.01 metres
Platform width	0.52 metres
Platform guard rail height	1.10 metres
Toe board height	0.15 metres
Maximum allowable manual force	200 Newtons
Maximum allowable wind speed	0 metres/sec
Maximum allowable chassis inclination	0 degrees
Electrical system	12 volt DC
Motor	0.7 kW
Batteries	1 x 80 Ah
Battery charger	Self-seeking automatic 90–240V AC

Hydraulic system	
Maximum pressure	250 bar
Reservoir capacity	1 litre

Function speeds (approx.)	
Raise	8 seconds
Lower	7 seconds
Approx. no. of lifts (fully charged + SWL)	300
Overall length (stowed)	1.2 metres
Overall height (stowed)	1.65 metres
Overall width (stowed)	0.70 metres
Overall mass (GVW)	225kg
Maximum wheel load	350kg

PRE-OPERATION CHECKLIST

1. Check structure (e.g. damage, cracks, corrosion, abrasion, welds, connections) ☐
2. Check platform (floor, rails, handrail sockets). ☐
3. Check castors (smooth movement, damage). ☐
4. Check brakes. ☐
5. Check oil leaks. ☐
6. Ensure battery is fully loaded. ☐
7. Ensure raise and lower functions operate well. ☐
8. Check emergency stop and lowering functions. ☐
9. Check safety decals and training card. ☐

EQUIPMENT CARE

Never push the equipment beyond its design limits. If it will not do what you want with reasonable ease and speed, assume you have the wrong tool for the job. Contact your local HSS Hire for advice. **Keep the equipment clean,** you will find this less of a chore if you clean it regularly, rather than wait until the end of the hire period. When not in use, **store the equipment somewhere clean, dry and safe** from thieves and unauthorised users.

FINISHING OFF

Lower the cage and exit. Turn the unit off and as a safety precaution, press red STOP button. Collect all parts together and give them a final clean up ready for return, to your local HSS Hire.



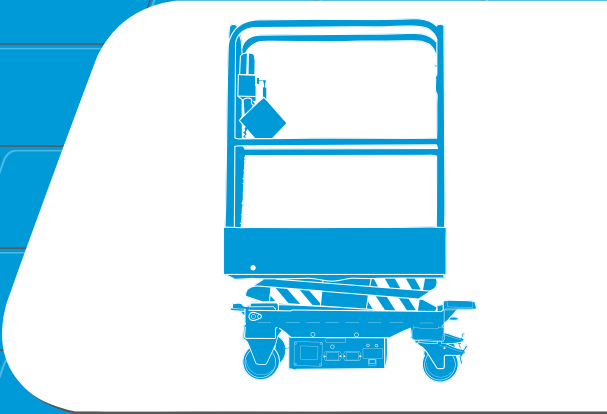
... have you been trained

The law requires that personnel using this type of equipment must be competent and qualified to do so. Training is available at HSS Training Solutions 0845 766 7799

...any comments?

If you have any suggestions to enable us to improve the information within this guide please e-mail your comments or write to the Safety Guide Manager at the address below e-mail: safety@hss.com

©HSS Hire Service Group Ltd 2009 No. 504/01
Group Office: 25 Willow Lane, Mitcham, Surrey CR4 4TS
Web Site: <http://www.hss.com>



Pop Up Access Platform

Simple, quick and safe powered portable scaffold tower, perfect for construction site and maintenance applications.



GENERAL SAFETY

For advice on the safety and suitability of this equipment contact your local HSS Hire.


There is a serious risk of personal injury if you do not follow all instructions laid down in this guide.


The hirer has a responsibility to ensure that all necessary risk assessments have been completed prior to the use of this equipment.

This equipment should only be used by an operator who has been deemed competent to do so by his/her employer.

This equipment is designed to be used by an able bodied, competent adult who has read and understood these instructions. Anyone with either a temporary or permanent disability should seek expert advice before using it.

Keep children, animals and bystanders away from the work area. Cordon off a NO GO area using cones and either barriers or tape, available for hire from your local HSS Hire.

 Never use this equipment if you are ill, feeling tired, or under the influence of alcohol or drugs.

 Wear practical, protective clothing, gloves, footwear and a protective hard hat. Avoid loose garments and jewellery that could catch in moving parts, tie back long hair.

Do not work near flammable gases or liquids, petrol or paint thinner fumes for example. Keep combustible materials at a safe distance – at least 5m.

Make sure you know how to switch this equipment OFF before you switch it ON in case you get into difficulty.

Make sure you know how to operate this equipment safely and are aware of its limitations before you use it.

Make sure that everyone is warned of what you are doing.

This machine is designed for internal use only. If working in a building which has large openings where wind gusts occur, DO NOT USE THE MACHINE.

The maximum number of occupants must not exceed one.

Never use the lift near overhead power lines or similar hazards.

Never exceed the equipment's safe working load of 240Kg.

Never operate the equipment alone. Ensure a competent adult is always within shouting range to operate the manual descent system or come to your aid if anything should go wrong.

Never use the platform as a goods lift or crane.

Never try to move the platform on its castors when elevated.

Never extend the height of the platform by using boxes, steps ladders etc.

Never modify the Pop Up Access Platform in any way without the full approval of the manufacturer.

Never manoeuvre the platform on an inclined surface otherwise it may become uncontrollable.

Never manoeuvre the Pop-Up whilst in its elevated position, as this may cause instability.

Never enter or exit the platform unless the platform is in the lowered and transport position.

Never apply external side loads to the platform or scissor structure.

Never allow persons at ground level to operate the controls whilst the platform is occupied (unless in an emergency situation).

WARNING

THIS MACHINE HAS NOT BEEN DESIGNED FOR OPERATION WITHIN POTENTIALLY EXPLOSIVE ATMOSPHERES

ELECTRICAL SAFETY

WARNING

THIS MACHINE IS NOT ELECTRICALLY INSULATED AND MUST NEVER BE USED FOR LIVE LINE WORKING. DEATH OR SERIOUS INJURY CAN RESULT FROM CONTACT WITH, OR INADEQUATE CLEARANCE FROM, ELECTRICAL CONDUCTORS

FIRE WARNING

BATTERIES GENERATE HIGHLY FLAMMABLE AND POTENTIALLY EXPLOSIVE HYDROGEN GAS WHEN CHARGING, SO, UNTIL CHARGING IS OVER AND THE GAS HAS DISPERSED...
ALWAYS STAND THE LIFT IN A WELL-VENTILATED SPOT, PREFERABLY IN THE OPEN AIR.
ALWAYS OPEN THE BATTERY COMPARTMENT COVER.
NEVER SMOKE OR ALLOW NAKED LIGHTS AND OTHER IGNITION SOURCES INTO THE AREA.

The Pop Up Access Platform is powered by 12v DC batteries. Always fully charge before use and recharge at regular intervals.

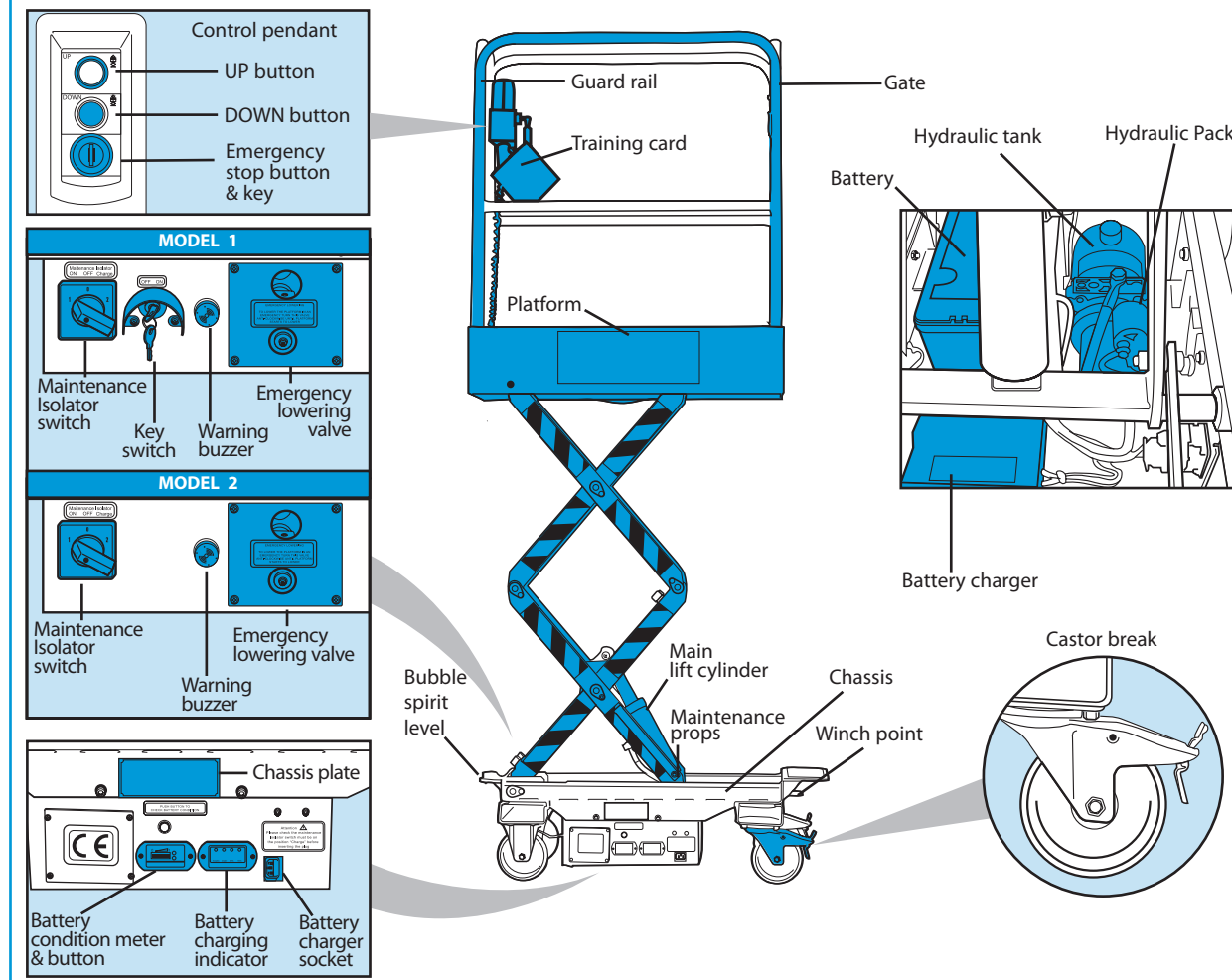
Never operate the lift when charging the battery.

After charging, switch OFF the power supply and disconnect the power supply lead from the charger. If the charger fails, or its power supply cable or lead becomes damaged, return the unit. Do not attempt to repair anything yourself.

Keep the charger dry at all times. Using electrical equipment in wet or damp conditions can be dangerous.

 To reduce the risk of electric shock, always use a suitable RCD (Residual Current-Operated Device) available from your local HSS Hire.

IDENTIFIER



GETTING STARTED

The Pop Up Access Platform is a scissor lift type work platform, which is manoeuvred manually into work positions and elevated and lowered using an electro-hydraulic control system.

Pop Up Access Platform must not be used in applications or for uses outside of the scope of this operating safety guide. Should a certain application not be covered, then your local HSS should be contacted.

This guide provides information on the safe operation of Pop Up Access Platform. Operators should read and understand all of the information contained within this manual prior to operating the platform.

This machine has been tested for Electromagnetic Compatibility (EMC) however, operation near to high

powered radio transmission apparatus (e.g. radar, antennae) or within strong electrical and/or magnetic fields may affect some features of this product.

Before operating platform familiarise yourself with the work area, check for possible hazards such as potholes, ramps, slopes and overhead obstructions that could affect the safe use of the equipment.

Operating procedures should be preceded with pre-operation checks (see Pre-operation checklist).

If checks reveal malfunctions or damage on the Pop Up Access Platform, then the machine must not be used until the problem is rectified.

If in doubt, seek further assistance from your local HSS Hire.

If safety decals are no longer legible or missing, please also contact HSS Hire.

BASIC TECHNIQUES

Select a site for the machine from which the platform will be able to reach the required work area. A visual inspection of the operating site should be made before setting up the machine.

Ensure that the ground on which the Pop Up is to operate is capable of supporting the weight of the machine (including the weight of the operator plus tools and materials). Be aware of floors or coverings (e.g. manhole covers) that may not withstand point loadings exerted by the castor wheels.

The platform must only be operated on flat (0° chassis inclination) and level surfaces. The allowable chassis inclination is indicated when the bubble spirit level is within the marked limits. All castor wheels must be in full contact with the ground.

Ensure that adequate clearance is available above and around the platform before elevation.

MANOEUVRING THE PLATFORM

Manoeuvre the platform into position using both hands on the guard rails at gate end. Take care to avoid trapping hands or feet whilst manoeuvring the platform.

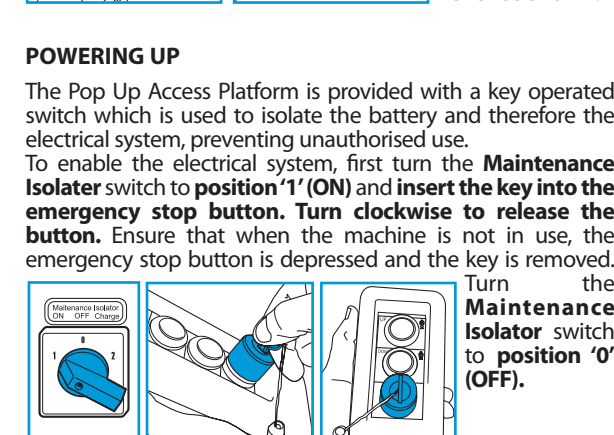
Never manoeuvre the Pop Up whilst it is elevated or with a person, tools or materials in the platform.



ENGAGING THE BRAKES

Always ensure that both castor brakes are locked before elevating the work platform to prevent any inadvertent movement.

The brakes are engaged by pushing down on the lever and pulling up the lever as shown.



POWERING UP

The Pop Up Access Platform is provided with a key operated switch which is used to isolate the battery and therefore the electrical system, preventing unauthorised use.

To enable the electrical system, first turn the Maintenance Isolator switch to position '1' (ON) and insert the key into the emergency stop button. Turn clockwise to release the button. Ensure that when the machine is not in use, the emergency stop button is depressed and the key is removed.

Turn the Maintenance Isolator switch to position '0' (OFF).