

Fire Blanket

FOLD 1

Hold Tab
as Shown

Black Tabs

FOLD 2

Turn Blanket
over Hand

FOLD 3

Fold Top of
Blanket over
Hand and
along the Top

Follow the illustration above for the correct way of holding and folding the blanket so that you are protected from the fire.

As well as using the blanket to smother flames from, for instance, a burning chip pan. The blanket can be used to roll a fire victim in.

If dealing with a victim, wrap the blanket fully around the body and roll the victim over the floor.

Practice! Always take time to get familiar with the trolley and its contents. **Don't wait until its needed before you read these instructions!**

EQUIPMENT CARE

Regularly check all the equipment. Always check the equipment's general condition before the start of each day or work session. **If any component has been**

used contact your local HSS Hire Shop for a replacement.

Handle all equipment with reasonable care and make sure that nothing is tampered with, if the 'anti-tamper tab' is missing, contact your local HSS Hire Shop for advise.

When required, place the equipment somewhere clean, dry and easily accessible. If at any time you are sure the equipment is not needed store the equipment somewhere clean dry and safe from thieves.

FINISHING OFF

If you have finished with the equipment, collect all parts together ready for return to your local HSS Hire Shop.



...any comments?

If you have any suggestions to enable us to improve the information within this guide please fax your comments or write to the Product Manager at the address below

Fax: 0181-687 5001

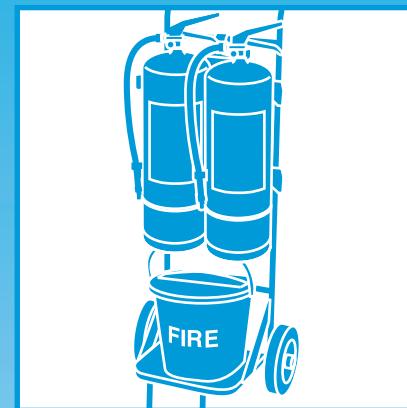
©HSS Hire Service Group Plc 1999 No. 859/01
Group Office: 25 Willow Lane, Mitcham, Surrey CR4 4TS

Web Site: <http://www.hss.co.uk>

Operating & Safety Guide 859

859/01

HSS Hire Shops



Fire Safety Trolley

A mobile fire-fighting unit designed for use as a precautionary system.


Code 50750

GENERAL SAFETY

For advice on the safety and suitability of this equipment contact your local HSS Hire Shop.

This equipment should be used by an able bodied, competent adult who has read and understood these instructions. Anyone with either a temporary or permanent disability, should seek expert advice before using it.

Keep children, animals and bystanders away from the test area.

 Never use this equipment if you are ill, feeling tired, or under the influence of alcohol or drugs.

If In Doubt

If you have any doubts about how to operate or care for the equipment you have hired correctly, don't experiment and hope for the best.

Always ask at your local HSS Hire Shop for advice.

Check the condition of the equipment before use. If it shows signs of damage or excessive wear, do not use it. Return it to your local HSS Hire Shop.

This equipment is NOT designed or supplied with the intention of being the main source for fighting a fire.

If a fire is discovered, your first priority is your safety and the safety of any one in the vicinity. The fire services MUST be called to attend before any effort is made to fight the fire.

DO NOT attempt to fight a fire unless you are sure that you will not be placing yourself in danger and that your effort will be effective.

REMEMBER If you are at all unsure about your safety, evacuate the area and leave the fire!

GETTING STARTED

The Fire Trolley consists of three fire fighting components.

Two dry powder general-purpose extinguishers, for use in fighting all types of fire. Liquid, solid or electrical fires can be attacked confidently with this type of extinguisher.

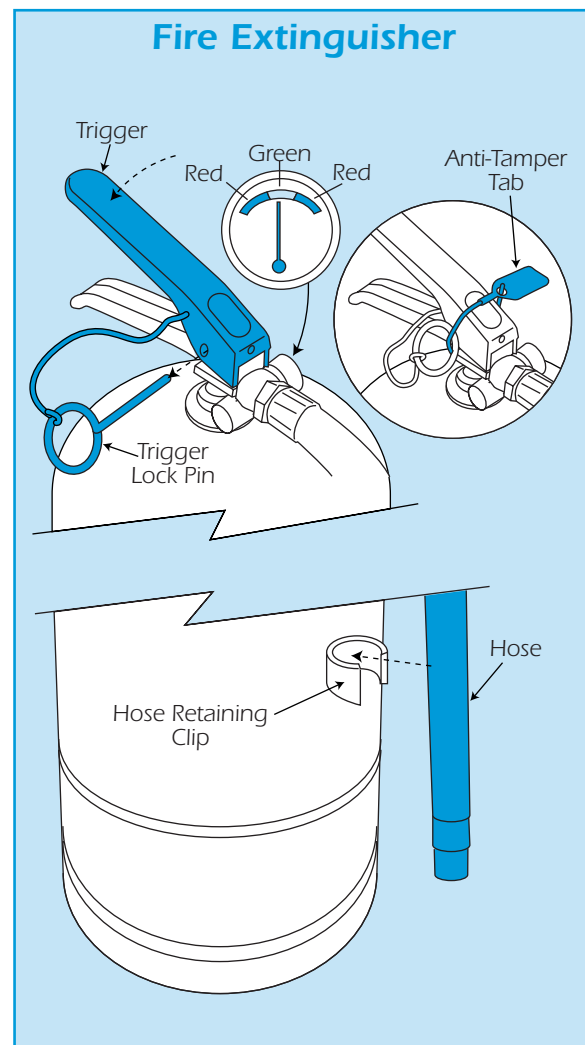
A fire bucket with lid, filled with sand, used to dampen very small fires or to soak and retain small pockets of flammable liquid.

A fire blanket, 1.2m X 1.2m square used to smother a fire, for example when either persons or a cooker is on fire.

Ensure the equipment is correctly set up, if in doubt, contact your local HSS Hire Shop for advice.

BASIC TECHNIQUES

Depending on the situation and the type of fire, you must decide which item to use. Read the following information carefully.



FIRE EXTINGUISHER...

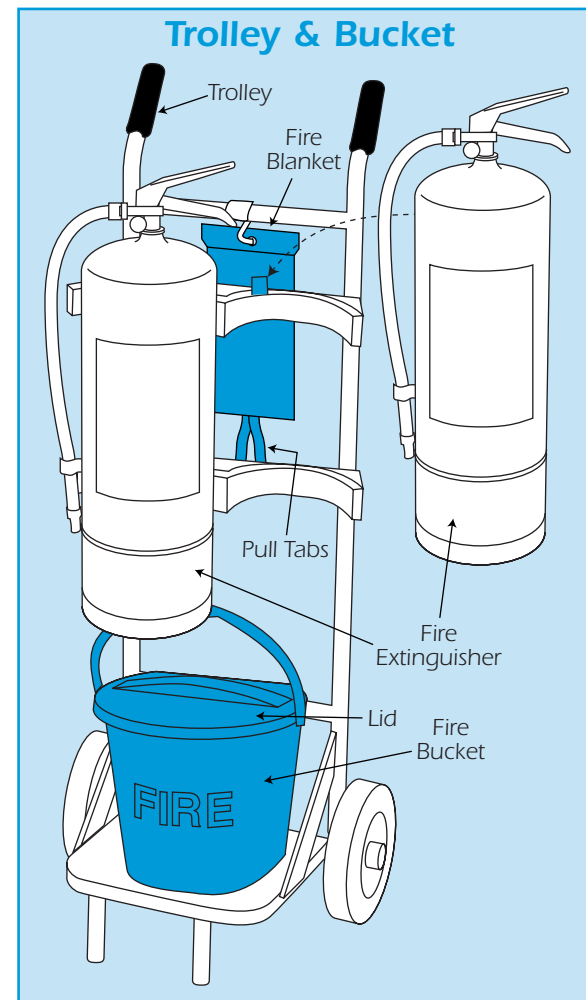
To operate the fire extinguisher, firstly lift the cylinder from the trolley by its lower handle.

Place the cylinder on the floor in an upright position. Pull the red plastic 'anti-tamper tab' off then pull out the trigger lock pin.

With one hand holding the trigger assembly, take hold of the hose with your other hand and pull the hose from its retaining clip.

Aim the end of the hose at the base of the fire and squeeze the trigger and lower handle together to activate the powder.

Keep the powder spray constant, do not use intermittently, and only release the trigger if the area being sprayed has extinguished.



FIRE BUCKET...

Lift the bucket from the trolley by its handle, remove the lid and sprinkle the sand over the fluid or fire.

FIRE BLANKET...

The blanket is folded within a bag, which is hooked onto the back of the trolley. Do not unhook the bag.

At the bottom of the bag are 2 black straps, which are used to pull the blanket out. Take a firm hold of each strap, one in each hand, and pull down until the blanket is completely removed.