

BASIC TECHNIQUES

The most important thing to remember when using the mortar mixer is that the mixing paddles must be rotating **BEFORE** loading and should continue to rotate until fully unloaded. Never switch the mixer ON with a load.

With the machine running, pour water, sand, cement or whatever you are mixing into the drum, through the top cover. The drum is capable of mixing up to 60ltr at a time.

You will note that the top cover is fitted with spiked plates, these are designed to cut open the bag of mix over the drum.

When the mix is ready to use, place a suitable container or wheelbarrow under the drum's outlet. With the motor still running, push the outlet door-operating lever forward to open the door.

When you have removed enough mix, pull the outlet door-operating lever back again until the door is fully closed.

At this point it is a good idea to pour the water for the next mix, into the drum. This will help rinse the drum as you use/lay the mixed load.

EQUIPMENT CARE

Never push the equipment beyond its design limits. If it will not do what you want with reasonable ease and speed, assume you have the wrong tool for the job. Contact your local HSS Hire Shop for advice.

Keep the equipment clean – you will find this less of a chore if you clean it regularly, rather than wait until the end of the hire period.

When not in use, store the equipment somewhere clean, dry and safe from thieves.

FINISHING OFF

Empty out any remaining mix and wash out the drum with plenty of clean water – add gravel to remove stubborn residue.

When the drum is clean, switch OFF and leave the drum with the outlet open to drain.

With the mixer switched OFF, disconnect the mixer from its power supply.

Neatly coil the power supply cable and give the unit a final clean up ready for return.



...any comments?

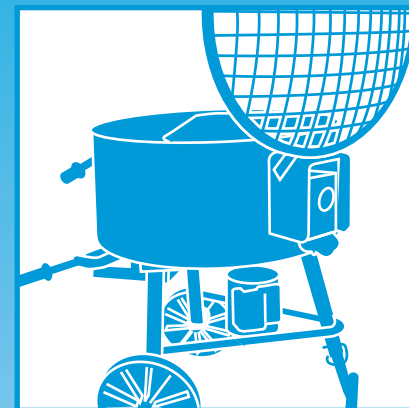
If you have any suggestions to enable us to improve the information within this guide please fax your comments or write to the Product Manager at the address below

Fax: 020 8687 5001

©HSS Hire Service Group Plc 1999 No. 895/01
Group Office: 25 Willow Lane, Mitcham, Surrey CR4 4TS

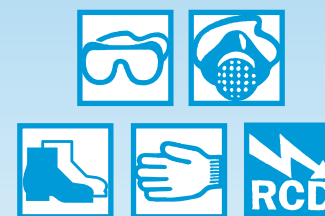
Web Site: <http://www.hss.co.uk>

HSS Hire Shops



Electric Mortar Mixer

For mixing both dry and wet fine grain materials, such as mortar, plaster, cement and floor sub bases.



Code 42351

GENERAL SAFETY

For advice on the safety and suitability of this equipment contact your local HSS Hire Shop.

There is a serious risk of personal injury if you do not follow all instructions laid down in this guide.

This equipment should be used by an able bodied, competent adult who has read and understood these instructions. Anyone with either a temporary or permanent disability, should seek expert advice before using it.

Keep children, animals and bystanders away from the work area.



Never use this equipment if you are ill, feeling tired, or under the influence of alcohol or drugs.



Safety goggles MUST be worn by everyone in the work area.



Some materials (cement for instance) **contain substances which, when inhaled, can be harmful to health.** A suitable mask must be worn when using this equipment.



Wear practical, protective clothing, gloves and footwear. Avoid loose garments and jewellery that could catch in moving parts, tie back long hair.

Always switch OFF the equipment when not in use.

Ensure the work area is well lit and ventilated, if in doubt, ask about site lighting and ventilation equipment at your local HSS Hire Shop.

Never leave the mixer switched ON and unattended.

Never carry or pull the equipment by its power supply cable.

Make sure you know how to switch this machine OFF before you switch it ON in case you get into difficulty.

Always disconnect the machine from its power supply before making adjustments to it. Having switched OFF, always wait for moving parts to come to rest.

Check the condition of the equipment before use. If it shows signs of damage or excessive wear, return it to your local HSS Hire Shop.

ELECTRICAL SAFETY

The HSS Electric Mortar Mixer requires a suitable 110V generated supply, or may be powered from the mains via a suitable 110v transformer.

If the equipment fails, or if its power supply cable or plug becomes damaged, return it. Never try to repair it yourself.

Keep cables out of harm's way, and clear of the work area.

Only use extension leads fitted with 16A 110V water resistant plugs and sockets, fitted with a screw collar.

Extension leads should be fully unwound and loosely coiled, away from the equipment. Never run them through water, over sharp edges or where they could trip someone.

Keep the equipment dry, using electrical equipment in very damp or wet conditions can be dangerous.



To reduce the risk of electric shock, always use a suitable RCD (Residual Current-Operated Device) available from your local HSS Hire Shop.

This machine is fitted with a low voltage protection system, if the power supply suffers a voltage drop or the motor becomes overloaded the unit will stop. To reset the unit, turn the ON/OFF switch to the OFF position and press the reset button.

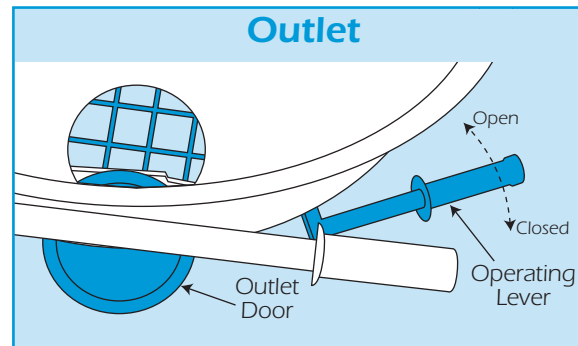
Ensure the machine and power socket are switched OFF before plugging into the power supply.

GETTING STARTED

Position the unit on firm, level ground. If necessary the two-rear wheel legs and the front leg's height can be adjusted to suit the terrain and allow adjustment to accommodate a wheelbarrow at the drums outlet.

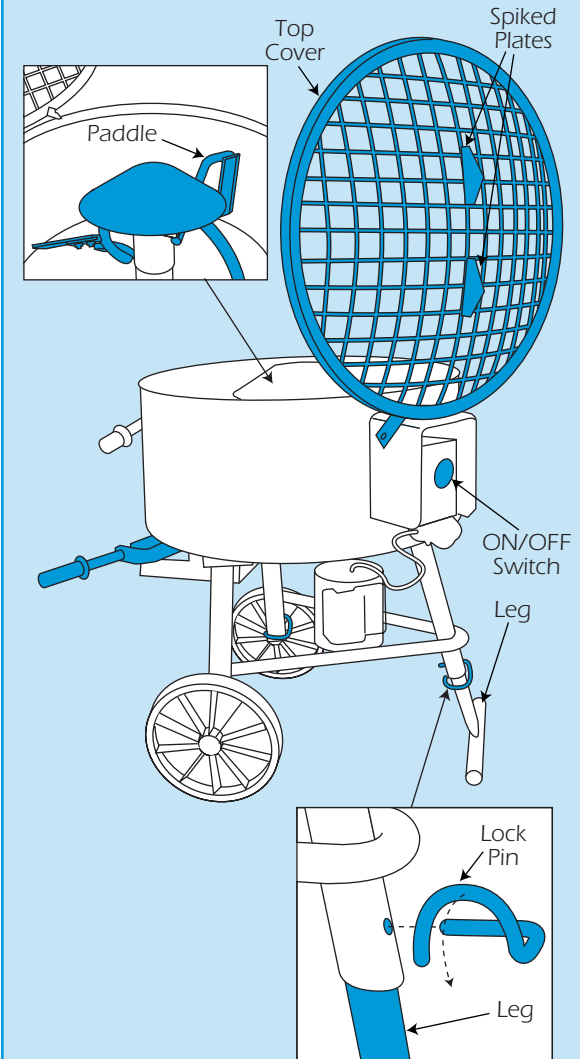
Tilt the unit to raise the respective leg, lift and remove the lock pin then slide the leg in or out until the required length is achieved. Relocate the lock pin to the nearest location hole. Repeat this process with the two remaining legs.

The top cover of the drum is fitted with a safety switch, when the cover is open the unit will not run. In addition, if it is lifted during a mix, the unit will stop.

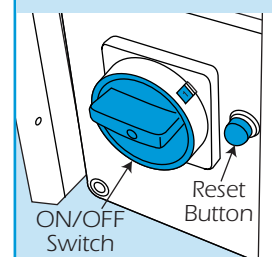


Close the cover then check that the drum outlet door is closed (see illustration). If it is open simply pull the outlet door-operating lever back until the door is fully closed.

Mortar Mixer



ON/OFF Switch



To switch the unit ON, turn the ON/OFF switch clockwise until the 'I' symbol is visible on the side of the dial. To switch OFF, simply turn the switch anti-clockwise to the 'O' symbol.

All that remains is to plug the mixer into its power supply and switch ON.