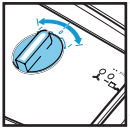


OPERATING INSTRUCTIONS



Two operating modes are possible:
 Switch position I: The vacuum operates with reduced suction power.
 Switch position II: The vacuum operates with maximum suction power

NOTE!

When moving the switch from position I to position II or vice versa, always leave it in the 0 position for at least 3 seconds

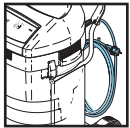
During work if the yellow LED lights up the suction power is no longer optimal. The filter element needs cleaning.

Switch off the vacuum.

Pull up and then release the filter cleaning button. This cleans the filter element. Repeat the procedure between about 5 and 10 times.

If the yellow LED flashes, the vacuum has switched off and the maximum filling level for picking up fluids has been reached.

Empty the tank through the drainage hose.



After finishing work switch off the vacuum and pull the plug of the mains lead out of the plug socket.

Clean the dirt tank and rinse with clear water if necessary.

Wind up the mains lead

Changing the bag type filter



Close the bag filter sleeve with the slide
 Pull the bag filter sleeve off the inlet fitting.
 Dispose of the used bag filter in accordance with the local waste disposal regulations.

accordance with the local waste disposal regulations. Place a new bag filter into the tank as described in the instructions (printed on the filter bag).

IMPORTANT!

Push the bag filter sleeve completely onto the inlet fitting

EQUIPMENT CARE

Never push the equipment beyond its design limits. If it will not do what you want with reasonable ease and speed, assume you have the wrong size or model for the job. Contact your local HSS Hire for advice.

Keep the equipment clean, you will find this less of a chore if you clean it regularly, rather than wait until the end of the hire period.

Check the debris bag at regular intervals and replace as necessary, following the instructions in 'GETTING STARTED'. Remember, it is your responsibility to dispose of any debris in a responsible manner.

Handle the equipment with care. Avoid dropping it, knocking it, or otherwise exposing it to damage.

When not in use, store the equipment somewhere clean, dry and safe from thieves.

FINISHING OFF

Switch OFF and unplug the vacuum.

Disconnect the head, wand and hose. Empty the dirt tank alternatively remove the debris bag and replace the motor unit.

Collect all the parts together, neatly coil the flex and give the tool a final clean up ready for return, to your local HSS Hire.



... have you been trained

The law requires that personnel using vacuum cleaners must be competent and qualified to do so. Industrial Vacuum Cleaners training available at HSS Training Solutions
0845 766 7799

...any comments?

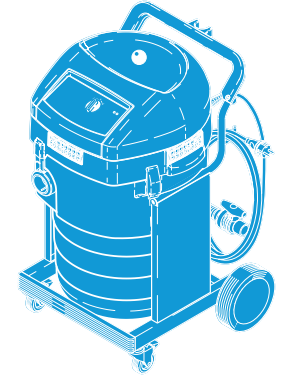
If you have any suggestions to enable us to improve the information within this guide please e-mail your comments or write to the Safety Guide Manager at the address below
e-mail: safety@hss.com

©HSS Hire Service Group Ltd 2007 No. 472/01
 Group Office: 25 Willow Lane, Mitcham, Surrey CR4 4TS

Web Site: <http://www.hss.com>

Operating & Safety Guide 472

HSS Hire



Industrial Wet & Dry Vacuum

For trade, industry and all professionals. A high power vacuum with easy filter cleaning for continuous use.





Code 58201

GENERAL SAFETY

For advice on the safety and suitability of this equipment contact your local HSS Hire.

This equipment should be used by an able bodied, competent adult who has read and understood these instructions. Anyone with either a temporary or permanent disability, should seek expert advice before using it.

Keep children, animals and bystanders away from the work area.

  Never use this equipment if you are ill, feeling tired, or under the influence of alcohol or drugs.

Ensure the work area is well lit and ventilated.

Always transport, store and operate the machine in an upright position.

Keep the unit's air vents clear of all obstructions.

This vacuum is not suitable for picking up health-endangering dusts and hazardous materials like: glowing cigarettes, hot ashes, petrol, solvents, acids, alkalis, magnesium, aluminium dust etc.

Always switch OFF and unplug everything before attempting to service or adjust the unit..

Before connecting vacuum to the power, ensure it is switched off.

Never carry, lift or pull the equipment by its power supply cable or hose.

Take care not to damage the mains lead by driving over, pinching or dragging. Pull out the mains plug only directly at the plug,

Before using the vacuum for the first time, check that it is in a good and safe condition. If it shows signs of damage or excessive wear, return it.

Do not make any technical modifications to the vacuum.

CAUTION!

Your safety could be endangered as a result!

CAUTION!

Never spray the top section of the vacuum with water: Danger for persons, danger of short circuits.


ELECTRICAL SAFETY

Most HSS Medium-duty Vacuums plug into a standard 240v 13amp power socket. However, 110v models (with a round yellow plug) must be provided with a suitable 110v generated supply, or powered from the mains via a suitable 110v transformer (minimum 2kVA tool rating).

If the equipment fails, or if its power supply cable or plug becomes damaged, return it. Never try to repair it yourself. Keep cables out of harm's way, and clear of the work area.

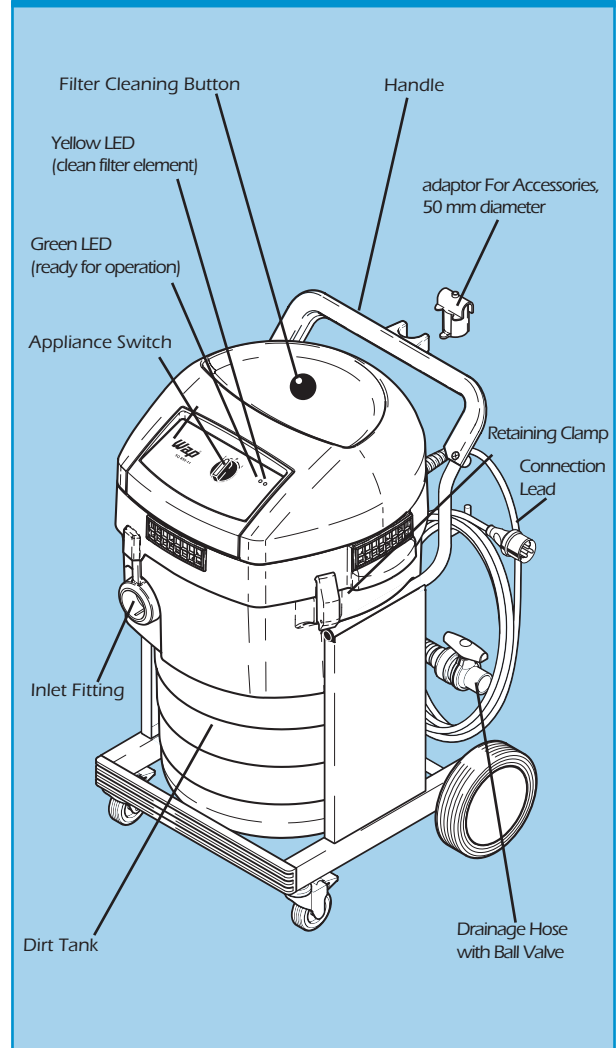
Extension leads should be fully unwound and loosely coiled, away from the equipment. Never run them through water, over sharp edges or where they could trip someone.

Using electrical equipment in very damp or wet conditions can be dangerous.

 To reduce the risk of electric shock, use a suitable RCD (Residual Current-Operated Device) available from your local HSS Hire.

Ensure the Vacuum and power socket are switched OFF before plugging into the power supply.

IDENTIFIER



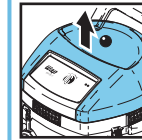
GETTING STARTED

CAUTION

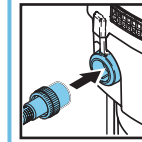
Industrial vacuum cleaner is suitable for picking up non-flammable, dry dusts and liquids.

On delivery, the accessories are lying in the tank and must be removed before the vacuum is used.

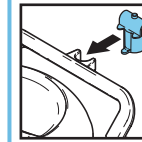
The plug must not yet be inserted into a plug socket.



Open the retaining clamps and lift off the vacuum's top section. Remove all accessories from the vacuum. Fit the vacuum top section and close the retaining clamps.



Connect the suction hose to the vacuum.



If necessary press the adaptor for accessories with a 50 mm diameter into the push-in clip. Make sure the ball valve on the drainage hose is closed.

ELECTRICAL CONNECTION

The operating voltage shown on the rating plate must correspond to the voltage of the mains power supply.

Ensure that the vacuum is switched off and insert the plug of the mains lead into a properly installed and fused plug socket with earthing contact.

PICKING UP DRY SUBSTANCES

Before picking up dry substances, the bag filter should always be installed in the tank. It is then easy to dispose of the material picked up and the service life of the main filter element is significantly increased. Dry cleaning without the bag filter is also possible.

Inflammable substances must not be picked up with the vacuum!

After picking up liquids, the filter element is damp. Damp filter elements can clog more quickly when dry substances are picked up. For this reason, the filter element should be dried or replaced by a dry element before picking up dry substances.

PICKING UP LIQUIDS

Before picking up liquids, the bag filter must always be removed from the tank.

Inflammable liquids must not be picked up with the vacuum! If foaming is observed, stop work immediately and empty the tank through the drainage hose.