

When not in use, store the equipment somewhere clean, dry and safe from thieves. Protect this equipment from frost and freezing conditions.

FINISHING OFF

Cleaning

The operator has a duty of care to ensure the equipment is returned clean of any potentially harmful contaminants. Equipment that has not been cleaned will not be accepted back by HSS.

If the unit is no longer needed, it must be emptied of any stored water.

To drain the unit, disconnect the supply hose from the hose adaptor and connect the adaptor to the inlet valve. Open the inlet valve (turn anticlockwise until the tap is in line with the direction of flow).

Next, lower the hand held spray and open its valve to allow the contents to drain away.

Once empty, close the inlet valve and give the unit a final clean up ready for return, to your local HSS Safe and Sure Depot.

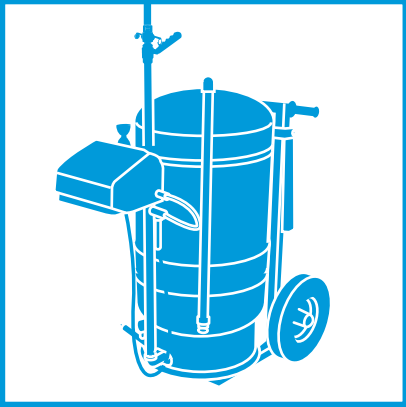
Mobile Safety Shower Specification	
Model	STD-40K
Inlet Connection Size & Type	1/2" Hose Connector
Piping And Valve Materials	ST.Steel Piping/St.Steel Valve. Plastic Overhead Arm.
Shower Operation	Hand Lever
Eyebath Operation	Pull Lid
Operating Pressure	3.0 Bar G Minimum
Water Capacity	114 Litres
Overall Dimensions	1500 deep X 780wide X 2250mm high
Unit Weight	82Kg



...any comments?

If you have any suggestions to enable us to improve the information within this guide please fax your comments or write to the Product Manager at the address below

Fax: 020 8687 5001



Mobile Safety Shower

A mobile safety shower unit, fitted with body spray and eye wash.

GENERAL SAFETY

For advice on the safety and suitability of this equipment contact your local HSS Safe and Sure Depot.

The hirer has a responsibility to ensure that all necessary risk assessments have been completed prior to the use of this equipment.

This equipment should only be used by an operator who has been deemed competent to do so by his/her employer.

This equipment may be used in a workplace subject to a permit to work, it is the hirers responsibility to ensure that the equipment's technical specification meets the requirements of any such permit to work prior to starting work. For further technical information contact your local HSS Safe and Sure Depot.

This equipment should be used by an able bodied, competent adult who has read and understood these instructions. Anyone with either a temporary or permanent disability, should seek expert advice before using it.



Never use this equipment if you are ill, feeling tired, or under the influence of alcohol or drugs.

Keep children, animals and bystanders away from the work area.

Wear sensible, suitably protective clothing and footwear plus any safety wear appropriate to the work in progress.

Make sure you know how to operate this equipment safely and are aware of its limitations before you use it.

Remember that this equipment does not guarantee life protection but if used correctly it will help provide a safer environment to work in.

Make sure that anyone in the immediate work area is warned of what you are doing.

Check the condition of the equipment before use. If it shows signs of damage or excessive wear, return it to your local HSS Safe and Sure Depot.

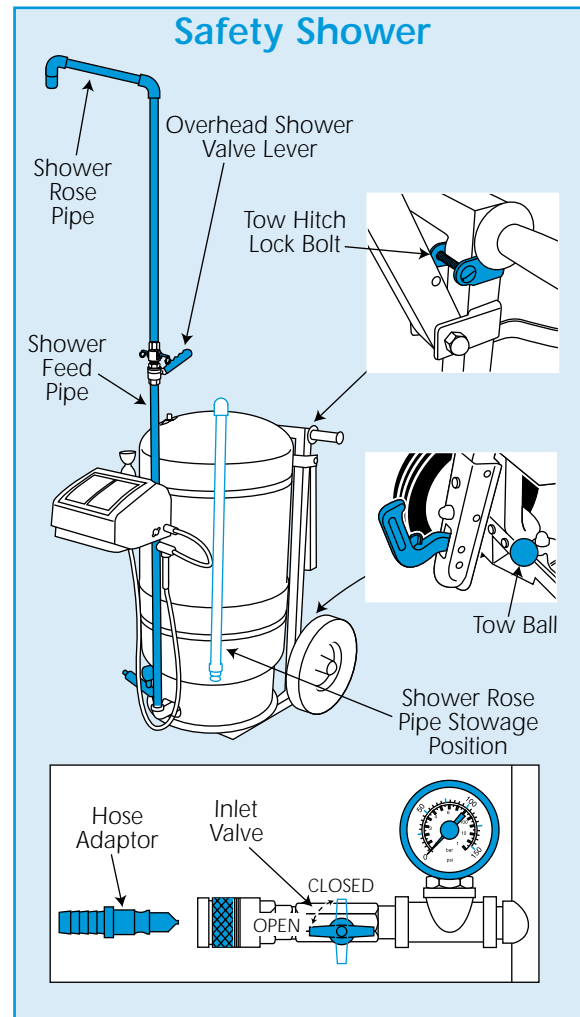
GETTING STARTED

Towing Restrictions

This unit may be towed if required, however, it may not be towed on the public highway.

When towing the unit DO NOT exceed a speed of 15 miles per hour.

Take the unit to a fresh main water supply, as close to the area where it will be required.



If towing the unit, unhook from any towing vehicle and stand the unit upright. Stand the safety shower on a firm, level surface strong enough to bear its weight. DO NOT use on slopes, soft ground or where there is a risk of subsidence.

The unit must be protected from direct sunlight and must not be stored or positioned where it will be subjected to temperatures below 0 degrees Celsius (32 Fahrenheit) and 40 degrees Celsius (104 Fahrenheit).

Unscrew and remove the tow hitch lock bolts and swing the tow hitch assembly down until the hitch engages with the tow ball (see illustration).

Unclip the shower rose pipe and fit it to the shower feed pipe (see illustration). To do this, raise the two lock levers, insert the shower rose pipe into the shower feed pipe and fully lower the two lock levers to hold the two pipes together.

The unit is supplied with a hose adaptor to allow connection to a main water supply. This adaptor should be connected to a 15mm water hose.

Check that all the outlet valves are closed.

Connect the adaptor to the inlet valve at the base of the unit (it is a simple push fit), and open the inlet valve (turn anticlockwise until the tap is in line with the direction of flow).

Open the main water supply valve and wait for the unit to fill and pressurise.

The unit is designed to work with the pressure supplied by the main water, which is usually around 4 bar.

The tank should be allowed to fill until the pressure in the tank pressure is either equal to the mains pressure or reaches 4 bar, whichever is the lowest. The main water supply MUST be turned off before the tank pressure exceeds 4 bar.

Once the tank has been filled, close the inlet valve, turn off the water supply and disconnect the supply hose from the unit.

If the pressure exceeds 4 bar, close the inlet valve, turn off the water supply and disconnect the supply hose from the unit. Open the overhead shower valve and release the excess water until the gauge reads 4 bar.

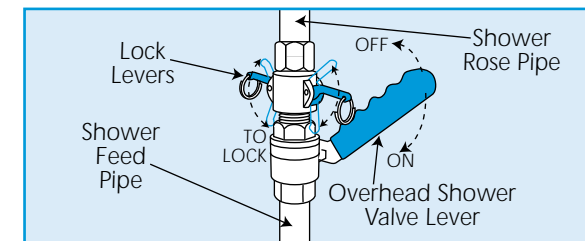
The Safety Shower is now ready for use, however, as part of the safety management you should assign someone to be responsible for checking the unit at regular intervals and to keep records of the results.

BASIC TECHNIQUES

There are three spray outlets available on this unit. An overhead shower, a hand held spray and an eye bath.

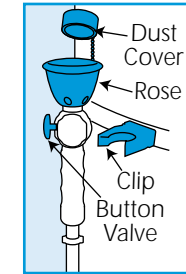
It is advisable that everyone in the work area who may either need the use of them or may be required to assist in their use, be made fully aware of its safe and correct operation.

OVERHEAD SHOWER



To operate the overhead shower, stand under the shower rose and move the green valve lever down. When finished, simply raise the valve lever to stop the flow of water.

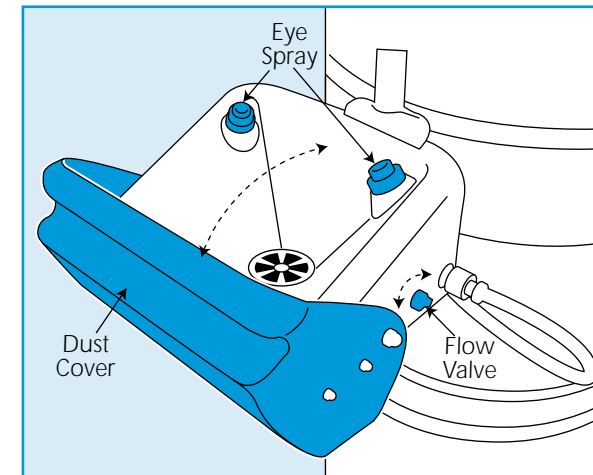
HAND HELD SPRAY



Unhook the hand spray from its clip, remove the dust cover and depending on model either press and slide the trigger valve or press the button valve to allow the water to flow.

To stop the water flow, either slide the trigger back and release or release the button valve. After use, replace the dust cover and hook the hand spray onto its clip.

EYE BATH



To operate the eye bath, pull the dust cover back this will automatically activate the water flow. To increase the flow rate, turn the flow valve anticlockwise, to decrease, turn the flow valve clockwise.

After use stop the water flow by closing the dust cover.

Whenever the unit has been used, it must be thoroughly cleaned of any contaminant and the system's tank refilled.

EQUIPMENT CARE

Never push the equipment beyond its design limits. If it is unsuitable for the type of contaminant or chemicals that the potential user may come in contact with DO NOT USE OR RELY ON IT. Contact your local HSS Safe and Sure Depot for advice.

Keep the equipment clean – during periodic checks the unit must be closely inspected for build-up of dust and dirt. Clean the unit regularly, rather than wait until the end of the hire period.